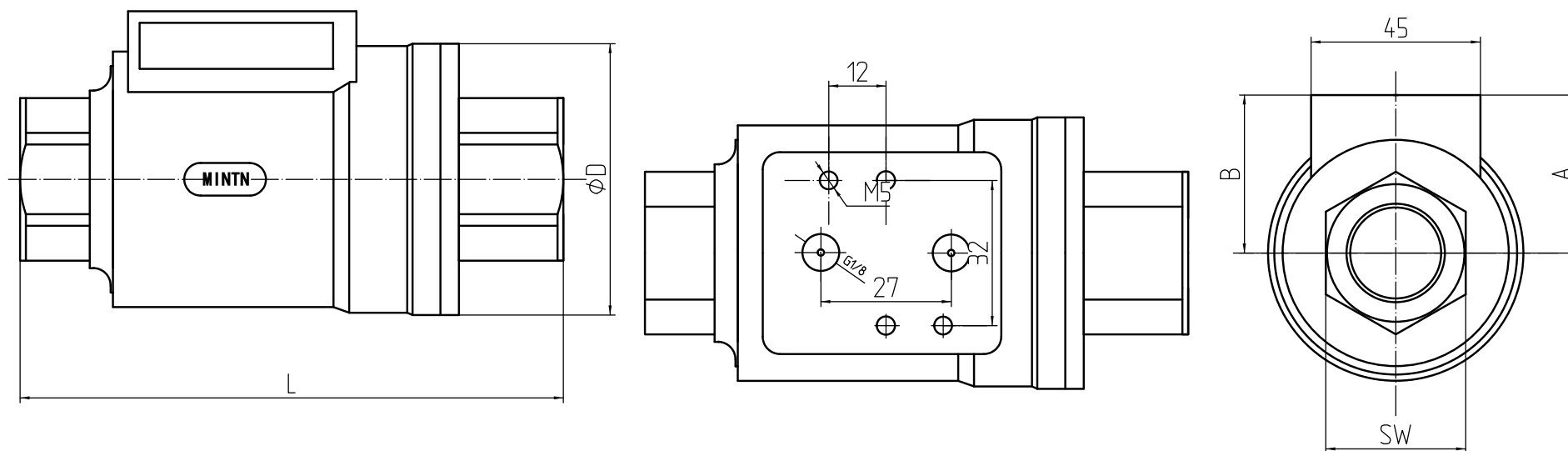


Technical parameters

Medium temperature	-20°C~+180°C
Ambient temperature	-20°C~+60°C
Nominal pressure	1.6MPa
Control gas	gas or air
Air pressure	0.3MPa~0.8MPa
Seal materia In cylinder	NBR/FKM



Size	A	D	SW	B	L	Thread End
DN10	56	46	22	33	98	3/8"
DN15	61	52	26.5	35	112	1/2"
DN20	72	64	32	40	135	3/4"
DN25	78	69	41	43	143	1"
DN32	94	86	50	51	165	1 1/4"
DN40	104	96	56	56	180	1 1/2"
DN50	116	108	70	62	207	2"

ZHEJIANG MINTN VALVE CO., LTD.

Describe	Pneumatic Shuttle Valve
Web	www.mintn.com
Contact	+86-577-55558668